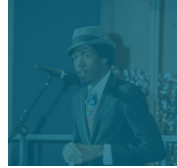
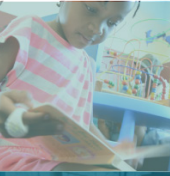
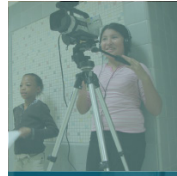
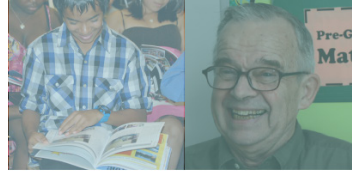


# ANNUAL REPORT

THE COMMUNITY FOUNDATION FOR THE NATIONAL CAPITAL REGION  
Our Year in Snapshot



# FY 2016

# LETTER FROM THE PRESIDENT & CEO

Dear Friends,

Since joining the team in June 2015, I've spent countless hours out in our community – meeting donors, grantees, beneficiaries, and partners. I've been humbled and honored to learn from so many of you, to hear your perspectives on The Community Foundation's role in our community, to see our donors' investments in action, and to work closely with my dedicated colleagues as we open a new chapter in The Community Foundation's history.

Through all of these meetings and site visits and coffee dates, there is a crystal clear theme – it's our job to be the community's connector. To be a backbone that supports and bolsters the many nonprofits that are providing essential services for our neighbors in the community. The Community Foundation connects caring people to causes that matter.

In fiscal year 2016, we did a whole of connecting – and were inspired by the vast generosity of our donors and partners. **This year, The Community Foundation granted over \$75 million to over 1800 nonprofit organizations, 68% of which were nonprofit organizations serving the greater Washington region!** In addition, we received over \$52 million in contributions during this year – a testament to the generosity and commitment of our family of donors.

**From all of us at The Community Foundation, we're so grateful you're a part of our family.** We offer our deepest thanks to our dedicated board members, the nonprofits making a difference every day, and the thousands of donors and nonprofits in the District of Columbia, Maryland, and Virginia who are committed to making greater Washington... even greater.

Best,

*Bruce McNamer, President & CEO*



# COMMUNITY FOUNDATION FAST FACTS

## OUR MISSION

Our mission is to strengthen the Washington metropolitan region by encouraging and supporting effective giving and by providing leadership on critical issues in our community.

**34**  
**STAFF**

(includes Raise DC)



Engaged In Donor Development And Stewardship, Community Leadership And Programs, Grant-making, Fund And Overall Administration.

ANNUAL GRANTS  
OF **MORE THAN**

**\$75**  
million

IN **FY16**

**\$13 MILLION**

IN DISCRETIONARY  
GRANTS IN

**EDUCATION**

**WORKFORCE DEVELOPMENT**

**SAFETY NET SERVICES**

SERVING  
**THOUSANDS**



OF LOCAL  
NONPROFITS

**\$306**  
million

ASSETS UNDER  
MANAGEMENT



IN **FY16**  
ADMINISTERED

**5,350**

GRANTS



**SERVING THE  
REGION:**

DISTRICT OF  
COLUMBIA

MONTGOMERY  
COUNTY

PRINCE GEORGE'S  
COUNTY

NORTHERN  
VIRGINIA



**775** FUNDS

Individuals, families, businesses and organizations work with community foundations to create permanent charitable funds that help meet the challenges of changing times. The foundation invests and administers these funds.

OVER

**\$1**

**BILLION**

GRANTED IN OUR  
43 YEAR HISTORY

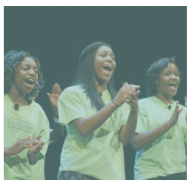
*As the largest funder of nonprofits in the greater Washington Region, we serve thousands of local nonprofits – which serve hundreds of thousands of people.*

*From investments in **education, workforce development, and safety net**...  
...to partnerships with individuals, businesses, and the government to catalyze positive change and develop solutions to community challenges...*

*Here are just a few highlights of the work we did for good in the community this year.*

## LOOKING AHEAD: OUR STRATEGIC VISION

For more than 100 years, community foundations have existed to pool donor funds for the social improvements of their local areas. For the last 42 of those years, The Community Foundation for the National Capital Region has done just that for the greater Washington region. But, like all institutions, we need to evolve to changing times, changing community needs, and changing financial realities. **This year we embarked on a strategic planning process to map out the next few years of our growth – asking ourselves, “how can The Community Foundation best contribute to the health and wealth of our community?”** We see a tremendous opportunity to do more and to be more. Over the next five years, then, we plan to substantially invest in our ability to mobilize philanthropy and build assets for the community; orient anew to service to our “customers” - our donors and our community partners; continue our investments in economic opportunity that extends to all our neighbors; and to launch ongoing “impact initiatives” to bring our donors together around timely and innovative approaches to building a greater Washington. We believe our strategic plan is a compelling road map for the years ahead. And we look forward to working with our many partners as we embark on this new path.



Our mission is to **STRENGTHEN** the Washington metropolitan region by encouraging and supporting effective **GIVING** and by providing **LEADERSHIP** on critical issues in our community. We are a community of givers dedicated to inspiring and creating change across the Washington region and beyond.





## BUILDING A STRONGER WORKFORCE

Our investment in workforce development extends beyond providing critical financial support through grants. We bring together public and private partners, and offer capacity building resources and peer learning opportunities to foster effective, sustainable workforce programs. In October 2015, JP Morgan Chase Foundation awarded The Community Foundation a two-year, \$400,000 grant to support expanded workforce development activities through our Greater Washington Workforce Development Collaborative. Intended to support work aligned with Chase's national New Skills at Work Initiative, our work to date has focused on laying the groundwork to launch a new industry sector partnership in both the IT/Cybersecurity and Healthcare sectors. Industry sector partnerships are a nationally-recognized best practice approach that bring together all of the stakeholders along the career pathway in a partnership that seeks to address the skills gap. **Through this investment, we will help at least 250 low wage individuals across the region to launch new careers in these sectors, and to engage a minimum of 20 employers in the effort.**

## CREATING LASTING LEGACIES

**We are proud to serve as the go-to resource for friends and neighbors who want to pool their resources to make a deeper impact on issues dear to their hearts.** This year, we housed a number of these funds, including the The Ellen Vala Schneider Fund. It was established to honor the memory of Ellen Vala Schneider, a longtime resident of Chevy Chase, community leader, and tireless volunteer who died by suicide in 2006. Since 2006, friends of Ellen have coordinated Ellen's Run, a 5K Run/3K Walk that brings together the community to raise funds to support local causes. To date over \$300,000 has been awarded to the Mental Health Association of Montgomery County, the Bethesda -Chevy Chase High School Community Scholarship Program (College Tracks) and the Neighbors in Need Montgomery Fund (CFMC).



## CONNECTING CARING PEOPLE TO CAUSES THAT MATTER

Sharing, an initiative of The Community Foundation for the National Capital Region, offers civic- and philanthropic-minded individuals, organizations, and companies across the greater Washington region a way to maximize the impact of their charitable giving. Sharing enables donors to do more with their money – leveraging their funds by combining them with others for greater community impact. It also helps them identify the most worthwhile recipients for those funds. Sharing operates targeted grantmaking programs in three communities within The Community Foundation's geographic footprint – Sharing DC (Washington, DC); Sharing Montgomery (Montgomery County, MD); and Sharing Prince George's (Prince George's County, MD). **In the last year, these three programs have invested \$942,000 in local nonprofits.**

## ADDRESSING YOUTH HOMELESSNESS

National estimates suggest 8% of youth under age 18 experience at least one incident of homelessness each year – and the number of homeless DC school students has increased 60% since 2009. **In June, we hosted a community forum featuring homeless and formerly-homeless youth telling the community – through their own words and experiences – who they are, how they struggle to survive, and how we can improve services to homeless youth and strategically invest resources to help prevent youth homelessness.** We were joined by over 100 community members, advocates, nonprofit leaders, and public sector partners for this robust and very important conversation.



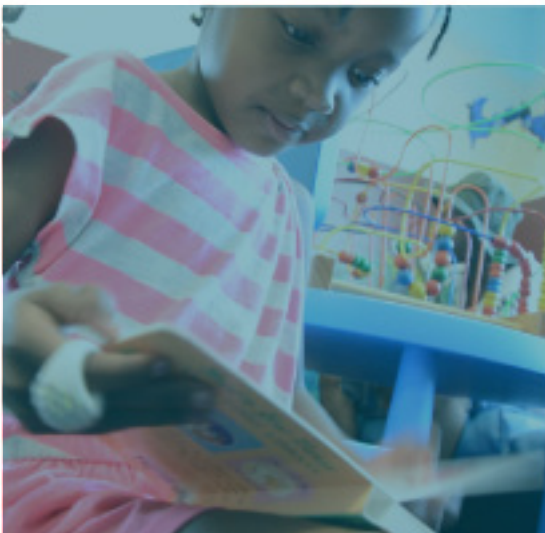
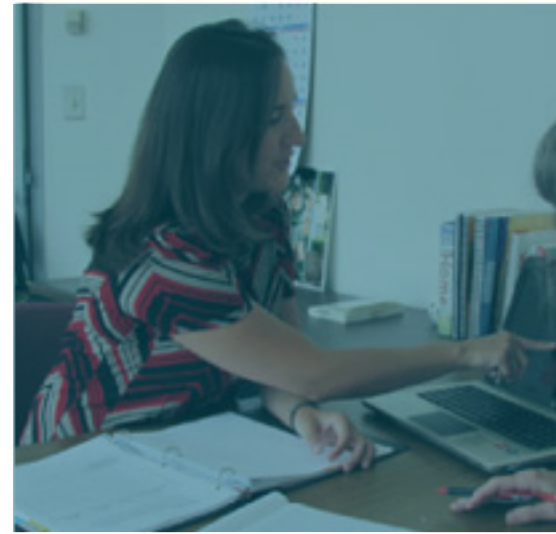


## CONNECTING YOUTH TO OPPORTUNITY

We released a groundbreaking report, *Connecting Youth to Opportunity: How Black and African American Youth Perspectives Can Inform a Blueprint for Improving Opportunity in Montgomery County, Maryland*. The report presents the findings and implications of a study that looked at disconnection from the perspectives of 1,210 youth, ages 14 to 24, who were high school students, high school graduates, and youth who left high school before graduating. **This report is helping to shape prevention and intervention efforts, and mobilize stakeholders – from the public, private, and nonprofit sectors – to provide more opportunities to help Black and African American youth in the County become successful adults who contribute significantly to their communities.**

## ENSURING NON-VIOLENT DRUG OFFENDERS ARE BACK ON TRACK

We were pleased to announce the launch of “Back on Track Prince George’s County,” a diversion program developed by The Prince George’s County State’s Attorney’s Office (PGSAO) focused on reducing recidivism among first-time, nonviolent felony drug offenders aged 18 to 26 years old. The program connects individuals to a career pathway to economic security that links education and training, helps secure life-sustaining wage jobs, and helps participants meet their civic obligations. **The Community Foundation has partnered with PGSAO in the selection of the nonprofit partner to assist in this effort, and announced the selection of Catholic Charities of the Archdiocese of Washington for the pilot of the program.** This organization will provide targeted case management services to a caseload of approximately 60 participants.



## IMPROVING THE QUALITY OF LIFE IN THE DISTRICT

Launched in 2013, The City Fund is a \$15 million grantmaking effort supported by public dollars from the District of Columbia. The Community Foundation is the Administrator of the City Fund, which funds programs/projects in arts, education, environment, health, public safety, senior and disability services, and workforce development. **This year we awarded \$3.6 million in grants to 59 nonprofit organizations serving District residents on behalf of the City Fund.** The awardee organizations will receive grants for up to \$100,000 for project/program support in the following issue areas: arts, education, environment, health, public safety, senior and disability services and workforce development.

## SUPPORTING UNDERSERVED CHILDREN, YOUTH, AND FAMILIES

In 2013, the former Freddie Mac Foundation established The Children and Family Legacy Fund at The Community Foundation. The fund was established to continue the former Freddie Mac Foundation’s ground breaking legacy of investing in the betterment of underserved children, youth, and families. **As of fall 2015, our Children and Family Legacy Fund has successfully administered over \$13 million in philanthropic investments to non-profits.**



# FINANCIAL REPORT



*\$75 million  
in grants*

.....



*Over 1800  
nonprofit  
grantees*

.....



*\$53 million in  
contributions*

.....



*68% of grants made  
in the Greater  
Washington Region*

.....



*Over 700  
component  
funds*

.....



*Over \$300  
million in  
assets under  
management*

.....

*The financial information contained in this annual report is unaudited and summarized for this report. Please visit [www.thecommunityfoundation.org](http://www.thecommunityfoundation.org) for a detailed summary of our 2016 financial information. This includes our 2016 donor gifts and grantmaking. Our 2016 audited financial statements will be posted December 2016. Additionally, our 2015 audited financial statements and 990 are currently available on our website.*



# BOARD OF TRUSTEES

## OFFICERS

Chair  
Mr. Neal Simon  
*CEO and Principal, Bronfman E.L. Rothschild*

Vice Chair  
Ms. Nancy Kfoury, Ph.D.  
*Psychologist*

Treasurer  
John Devine  
*Strategic Advisor, Brown Advisory*

Secretary  
Dr. Charlene Dukes  
*President, Prince George's Community College*

## TRUSTEES

Ms. Mary Pat Alcus  
*Retired Financial Advisor*

Mr. Kenny Emson  
*Senior Vice President, Finance and Administration, National Multifamily Housing Council*

Ms. Wendy Goldberg  
*Co-Chair, Raise DC*

Ms. Artis Hampshire Cowan  
*Founder and Principal, Leveraged Leadership Group, LLC*

Mr. Stephen Huttler  
*Senior Partner, Pillsbury Winthrop Shaw Pittman LLP*

Mr. Bruce McNamer  
*President and CEO, The Community Foundation for the National Capital Region*

Mr. Daniel Mayers (Chair, Sharing DC Advisory Board)  
*Retired Partner, Wilmer Hale*

Mr. Ethelbert Miller  
*Board Chair, Institute for Policy Studies (IPS)*

Mr. Thomas Murphy (Chair, The Community Foundation in Montgomery County)  
*Retired, President of Community Banking, EagleBank*

Mr. David E. Shiffrin  
*Retired Attorney*

Mr. William Shipp (Chair, The Community Foundation in Prince George's County)  
*O'Malley, Miles, Nylan & Gilmore, P.A.*

Mr. Sterling Speirn  
*Former CEO and President  
The Peninsula Community Foundation and  
W. K. Kellogg Foundation*

Ms. Denise Turner Roth  
*Former Administrator, General Services Administration*

Ms. Katharine Weymouth  
*Senior Advisor, Laurel Strategies  
Former CEO and Publisher, The Washington Post*

Mr. Cliff White  
*Partner in SWaN Investors  
Former Founding Partner of NEW Customer Service  
Companies, Inc.*

## EMERITA

Ms. Victoria P. Sant  
*The Summit Foundation*

# STAFF

## EXECUTIVE

Bruce McNamer, President & CEO  
Ayann Johnson Bailey, *Executive Assistant to the President/  
Office Manager*

## FINANCE & ACCOUNTING

Shannon Scott, *Chief Financial Officer*  
Adrienne Brown, *Director of Accounting & Administration*  
Juliana Mitrojorgji, *Director of Finance*  
Hart Franko, *Senior Accountant*  
Kimberly Arriola, *Staff Accountant*  
Mallory Slivka, *Administrative Associate/Receptionist*  
Kathy Matthews, *Grants Manager*  
Kesha Chandler, *Grants Management Associate*

## PHILANTHROPIC ENGAGEMENT

Nancy Withbroe, *Vice President, Philanthropic Engagement*

District of Columbia  
Amina Anderson, *Director, DC Office*  
Nonsom Ofulue, *Donor Services Associate*

Montgomery County  
Anna Hargrave, *Executive Director*  
Bridget Hanagan, *Donor Services Officer*  
Kevin Donnelly, *Donor Services Associate*

Prince George's County  
Desiree Griffin-Moore, *Executive Director*  
Mustafa Rahin, *Donor Services Officer*

Brand and Impact  
Jenny Towns, *Director of Communications and Marketing*  
Sydney Golden, *Communications and Design Manager*

## COMMUNITY INVESTMENT

Tonia Wellons, *Vice President, Community Investment*  
Benton Murphy, *Senior Director, Philanthropic Services*  
Silvana Straw, *Senior Philanthropic Services Officer*  
Dawn Leary, *Senior Philanthropic Services Officer*  
Alicia Reid, *Philanthropic Services Officer,  
Children & Family Legacy Fund*  
Manon Matchett, *Philanthropic Services Officer,  
The City Fund*  
Melen Hagos, *Community Investment Associate*

## DEVELOPMENT

Rebecca Rothey, *Vice President, Development,  
Senior Philanthropic Advisor*  
Joanne Pipkin, *Director of Development*  
Emily Davis, *Donor Services Associate*

